

Mycom Complete Machine Room 200VLD (x3) & N8WB (x2)

Specifications

Brand	Mycom
Type	Complete Machine Room 200VLD (x3) & N8WB (x2)
Refrigerant	NH 3 (ammonia)
Refrigerant type	R717
Electromotor Specs	(2x) 50 Hz - 200 kW - 2950 RPM (2x) 50 Hz - 160 kW - 1200 RPM (1x) 50 Hz - 250 kW - 2950 RPM
Unloaded Start	✓
Capacity Control	✓
On steel base frame	✓
Pressure safety switches	✓
Hp/Lp/Op	
Pressure gauges	✓
Hp/Lp/Op	
Liquid receiver	✓
Liquid receiver ltr.	850
Oil separator	✓
Liquid line filter drier	✓
Sight Glass	✓
Solenoid Valve	✓



Control panel	✓
Remarks	Y.o.b. 2007
Package / Rack	✓
Stock	1

Description

Used Mycom Complete Machine Room 200VLD (x3) & N8WB (x2)

Complete Mycom machine room on the refrigerant Ammonia (NH3/R717). The installation is complete with the following components:

2 pieces Mycom 200VLD-HE screw compressor skids. Complete with a Leroy-Somer PLS315M-T electric motor: 50/60 Hz - 200/230 kW - 2970/3568 RPM, Mycom HS7580-200 oil separator with a volume of 1340 liter, Mycom OC20245-V oil cooler, Mycom F50P oil pump and 2 oil filters, pressure and safety switches/gauges. The compressor has a capacity of 341 kW at the following temperatures: evaporating temperature -32°C & condensing temperature +35°C. Dimensions: 3950x1550x2500 mm (LxWxH) & weight: 4300 kg.

1 piece Mycom 200VLD-M screw compressor skid. Complete with a Leroy Somer PLS315L-T electric motor - 50 Hz - 250/288 kW - 2970/3568 RPM, Mycom HS 7533-200 oil separator with a volume of 560 liter, Mycom OC-20245 V oil cooler, Mycom F50P oil pump, oil filters, pressure and safety switches/gauges. The compressor has a capacity of 888 kW at the following temperatures: evaporating temperature -7°C & condensing temperature +35°C. Dimensions: 3750x1800x2700 mm (LxWxH) & weight: 4500 kg.

2 pieces Mycom N8WBHH-BB reciprocating compressor skids. Complete with a electric motor - 50 Hz -

160 kW - 1200 RPM, Mycom OSF250 oil separator with a volume of 58 liters, oil cooler and pressure and safety switches/gauges. The compressor has a capacity of 472 kW at the following temperatures: evaporating temperature -7°C & condensing temperature +35°C. Dimensions: 2550x1350x2610 mm (LxWxH) & weight: 3000 kg.

1 piece Axima 121162-06 liquid separator with a volume of 9774 liter. The separator has a capacity of 1880 kW at -10°C. Dimensions: 5600x2200x980 mm (LxWxH) & weight: 2993 kg.

1 piece Axima 121162-07 liquid separator with a volume of 5334 liter. The separator has a capacity of 680 kW at -30°C. Dimensions: 2600x1600x650 mm (LxWxH) & weight: 1724 kg.

2 pieces Hermetic CAM 2/2 liquid pump with the following specifications: Qmax: 8,0 m³/h - Hmax: 21,0 m - Pmax: 4,3 kW. Dimensions: 660x220x410 mm (LxWxH).

3 pieces Hermetic CAM 3/3 liquid pumps with the following specifications: Qmax: 15,0 m³/h - Hmax: 85,0 m - Pmax: 11,5 kW. Dimensions: 840x300x630 mm (LxWxH).

1 Piece Vahterus PSHE 3HH-34/1/1 Q plate heat exchanger with a volume of 2,7 dm³ (Glycol) / 4,2 dm³ (Ammonia). Complete with a Witt HR 1-L/N float with a volume 3 liters. Capacity: 75 kW. Dimensions: 550x350x850 mm (LxWxH) & Weight: 120 kg.

1 Piece Vahterus PSHE 3HH-48/2/1 Q plate heat exchanger with a volume of 3,8 dm³ (Glycol) / 5,9 dm³ (Ammonia).

Capacity: 40 kW. Dimensions:
550x350x850 mm (LxWxH) & Weight:
115 kg.

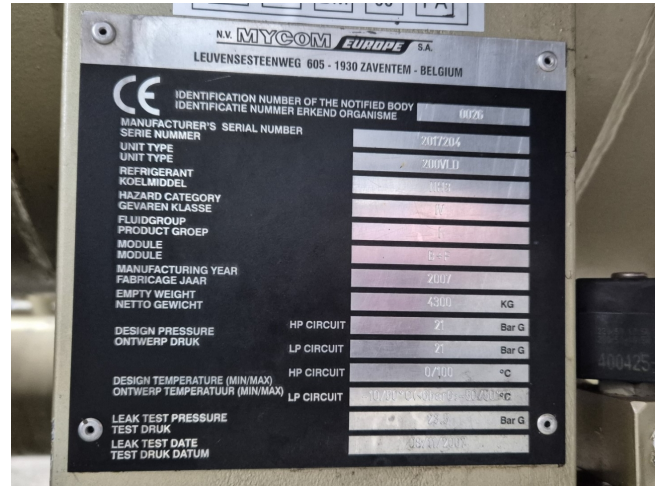
2 pieces Grundfos TPD 40-XXX/2 X-F-A-GQQE water pumps complete with a Grundfos MG 112MC2-28FF215-D1 electric motor: 50/60 Hz - 2910/2930 - 3510/3540 RPM - 4,0 kW. The pump has following specifications: Qmax: 18,0 m³/h - Hmax: 25,0 m - Pmax: 4,0 kW. Dimensions: 600x400x770 mm (LxWxH).

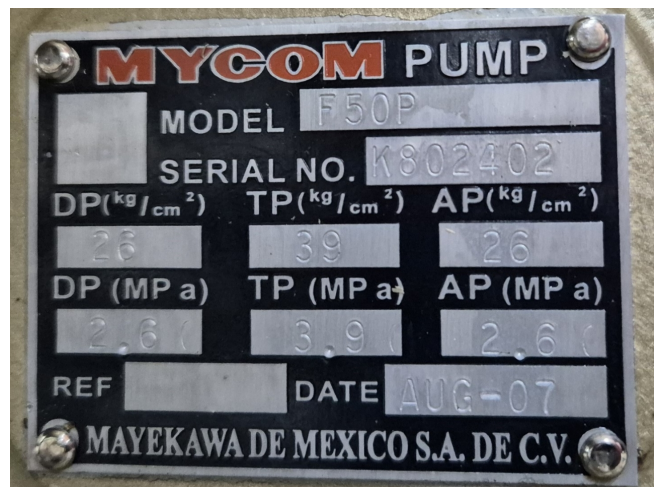
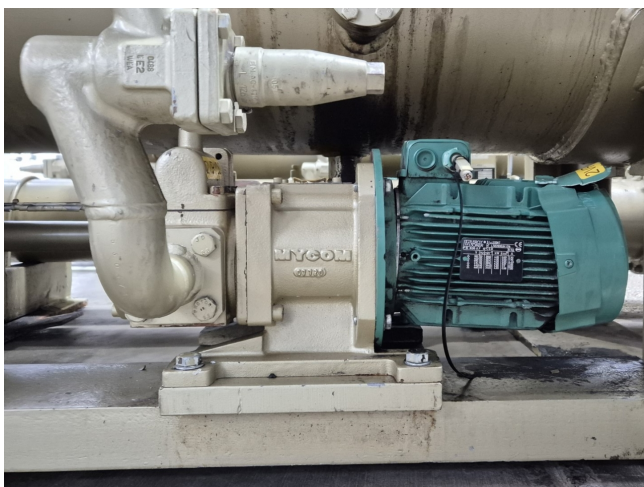
Further the machine room comes with control cabinets and:
6x Danfoss 130B2447
6x Danfoss FC-102P11KT4P55H1XG

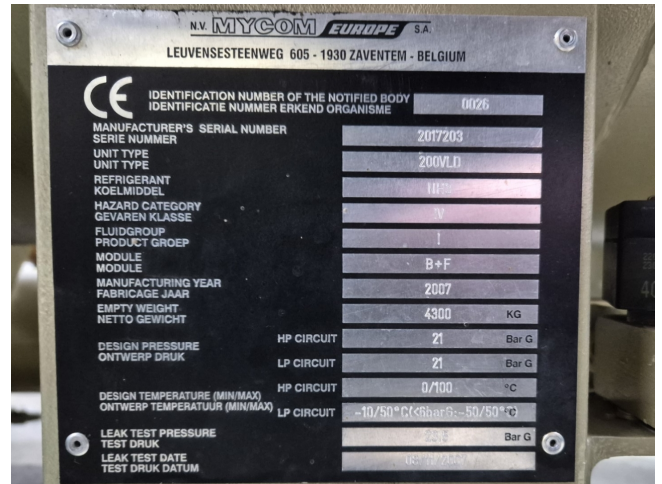
*Why choose for HOSBV? Were not only the largest used refrigeration specialist in Europe, but also, we deliver all equipment including an extensive test, warranty and industrial cleaning.

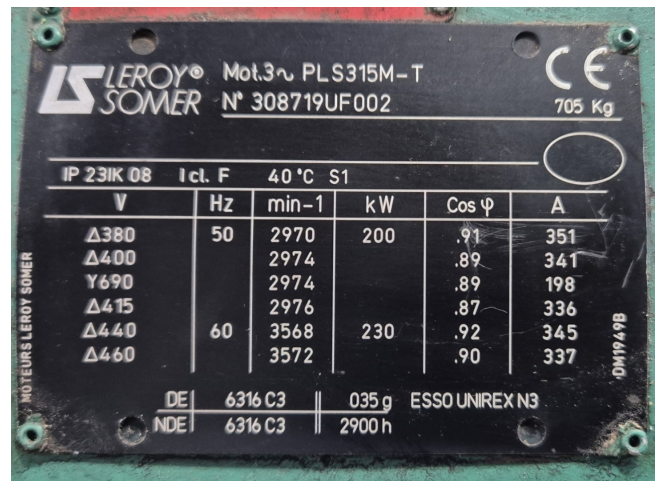
*Optional we can also perform a new paint job and arrange the logistics.

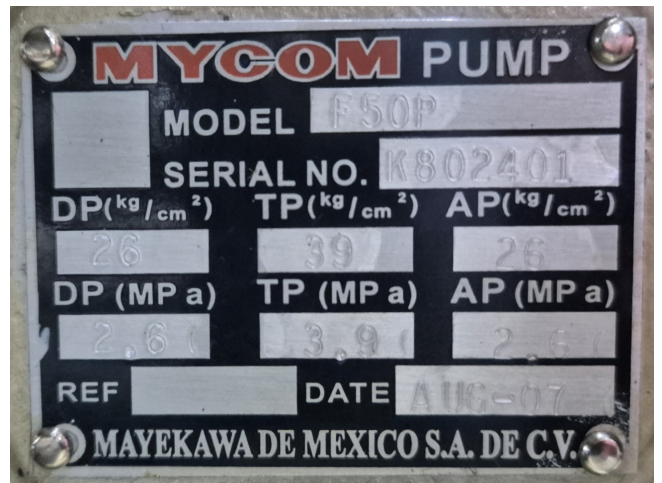
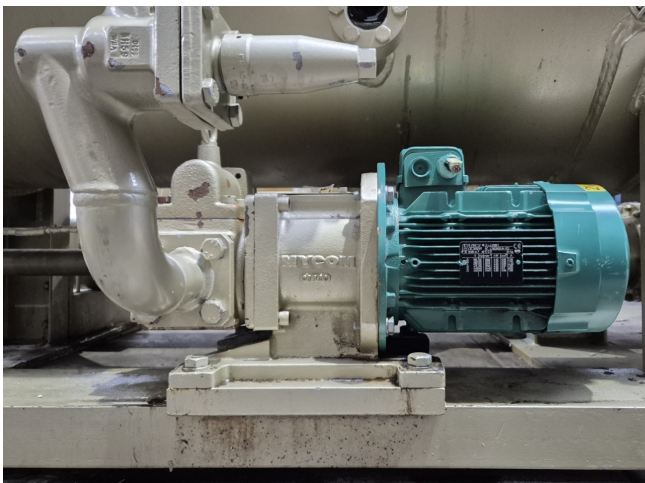


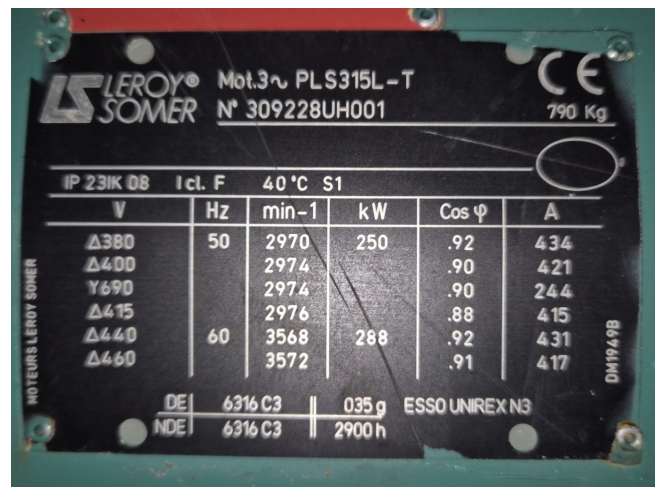
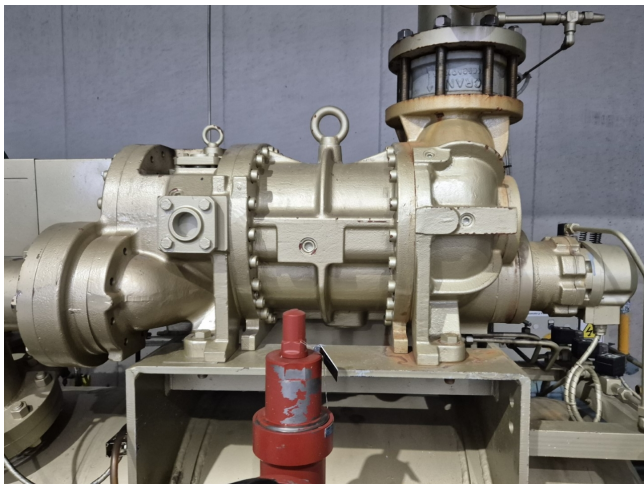
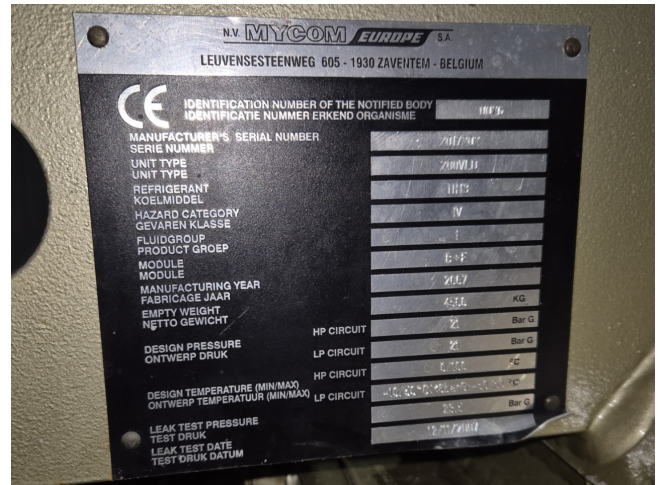


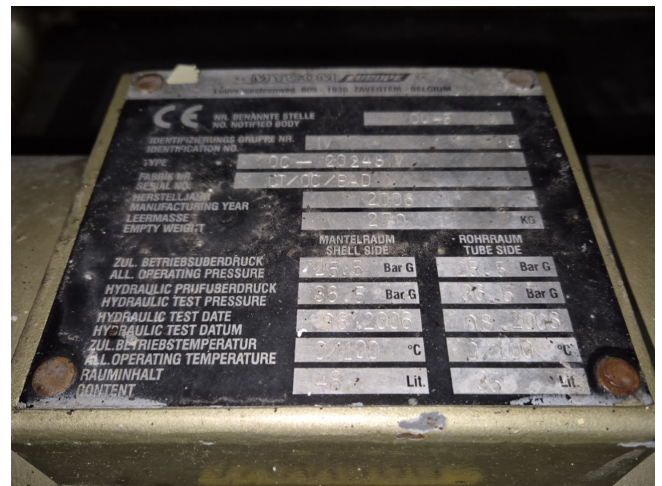


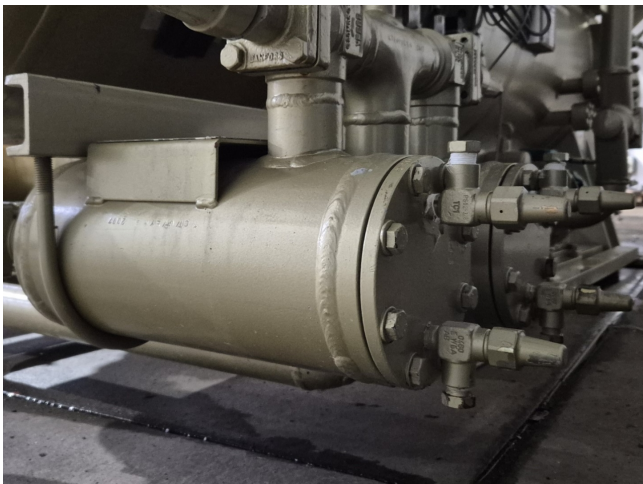














Serial	838143
UNIT TYPE	1000000
UNIT TYPE	1000000
REFRIGERANT	R404A
KOELMIDDEL	R404A
HAZARD CATEGORY	3
GEVAREN KLASSE	3
FLUIDGROUP	3
PRODUCT GROEP	3
MODULE	3
MODULE	3
MANUFACTURING YEAR	2007
FAABOORGE JAAR	2007
EMPTY WEIGHT	3000
NETTO GEWICHT	3000
HP CIRCUIT	10
LP CIRCUIT	10
HP CIRCUIT	10
LP CIRCUIT	10
DESIGN TEMPERATURE (MIN/MAX)	-40/10
ONTWERP TEMPERATUUR (MIN/MAX)	-40/10
LEAK TEST PRESSURE	10
TEST DRUK	10
TEST DATE	2007
TEST MILIEU	2007



